



Roode Vallei Country Lodge

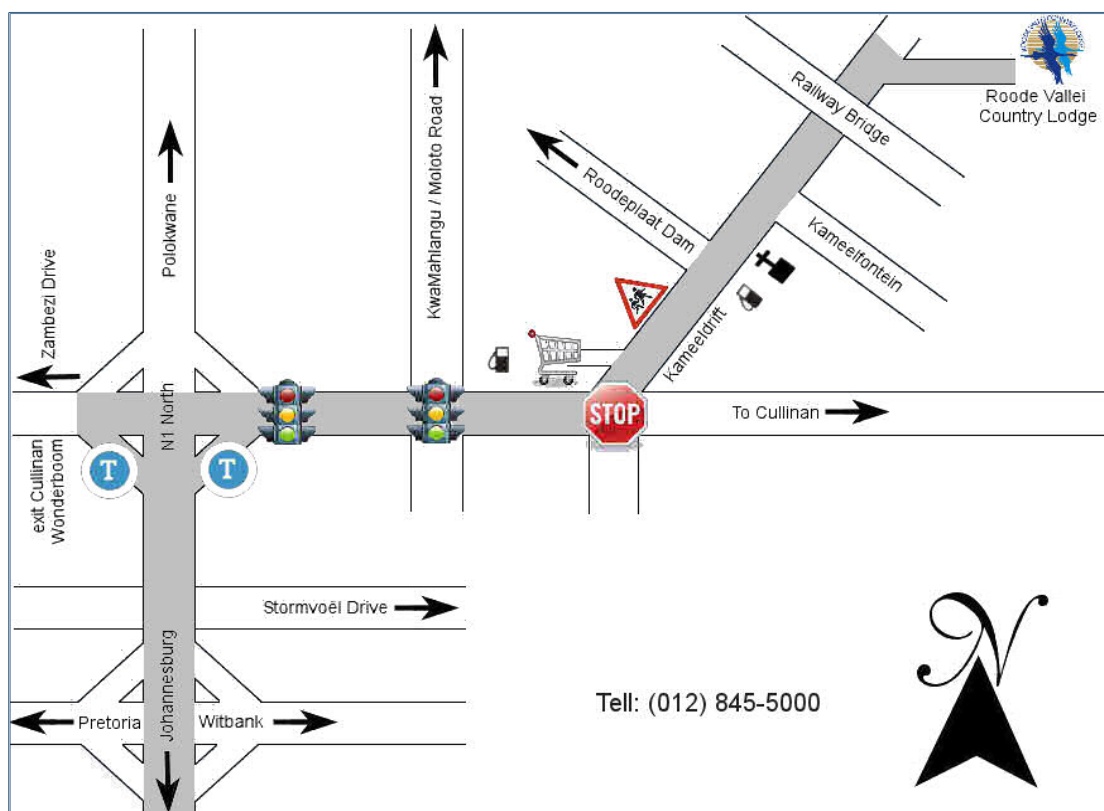
(Pty) Ltd Reg. No. 1984/02979/07

Directions

- From Johannesburg or Pretoria travel on N1 north towards Polokwane until you reach Exit 152 "Zambezi Drive / Cullinan / Wonderboom".
- Take exit 152 by the Zambezi Toll Gate (R6.60), at end of the off-ramp turn right into Zambezi Drive.
- Travel 200 m and cross the 1st traffic light, continue for 1.2 km and cross 2nd traffic light.
- Continue for 700 m up to a fourway stop street and turn left into Kameeldrift Road.
- Continue for 5.6 km until tar road becomes a dirt road under the railway bridge.
- Roode Vallei is 150 m further on the dirt road on your right hand side.

From OR Tambo International Airport

- From OR Tambo International Airport take R21 towards north Pretoria
- Continue and pass Tembisa and Nelmapius off-ramps
- Take the N1-North off-ramp towards Polokwane
- Pass Pretoria / Witbank and Stormvoël off-ramps
- After Stormvoël off-ramp, take Zambezi Road – Exit 152 off-ramp
- From there follow direction on Map



Plot 81, Zeekoegat, Kameeldrift East, Pretoria
 PO Box 14991, Lynn East, 0039
 Tel: (+27 12) 845-5000
 Fax: (+27 12) 845-5050
www.roodevallei.co.za